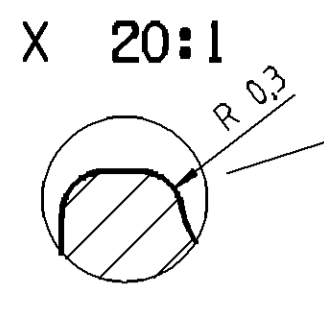
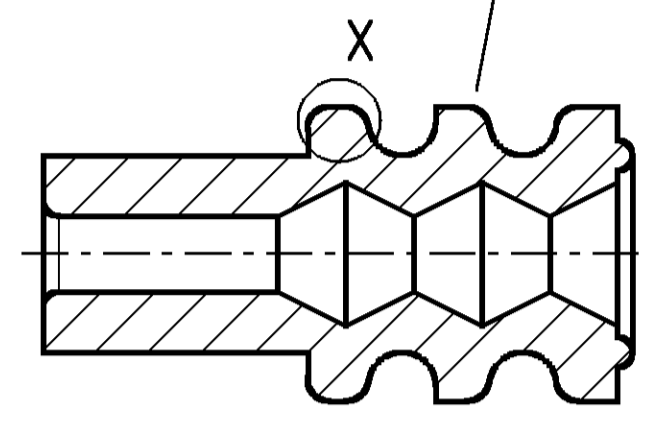


alternatively only for / wahlweise nur fuer:  
 ID-Nr.: 401 257 / Part-No.: 15327918  
 ID-Nr.: 406 131 / Part-No.: 15327913  
 ID-Nr.: 406 129 / Part-No.: 15339412



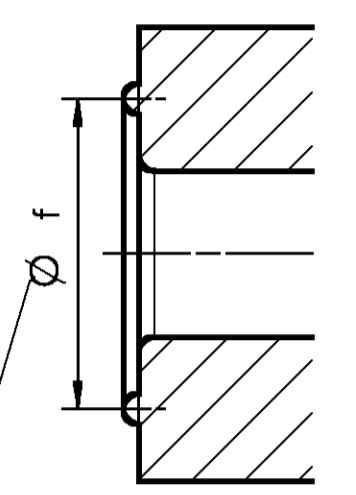
middle sealing lip alternatively bent only for:  
 mittlere Dichtlippe wahlweise gedreht nur fuer:  
 ID-Nr.: 401 257 / Part-No.: 15327918  
 ID-Nr.: 406 131 / Part-No.: 15327913  
 ID-Nr.: 406 129 / Part-No.: 15339412

revolve round optionally interrupt injection point possible  
 umlaufend wahlweise unterbrochen Anspritzung moeglich



parting line / injection point possible  
 Werkzeugtrennung / Anspritzung moeglich

Parts not allowed on front face to stick together (lfd.-No.: 4-6)  
 Teile duerfen stirnseitig nicht miteinander verkleben (lfd.-Nr.: 4-6)

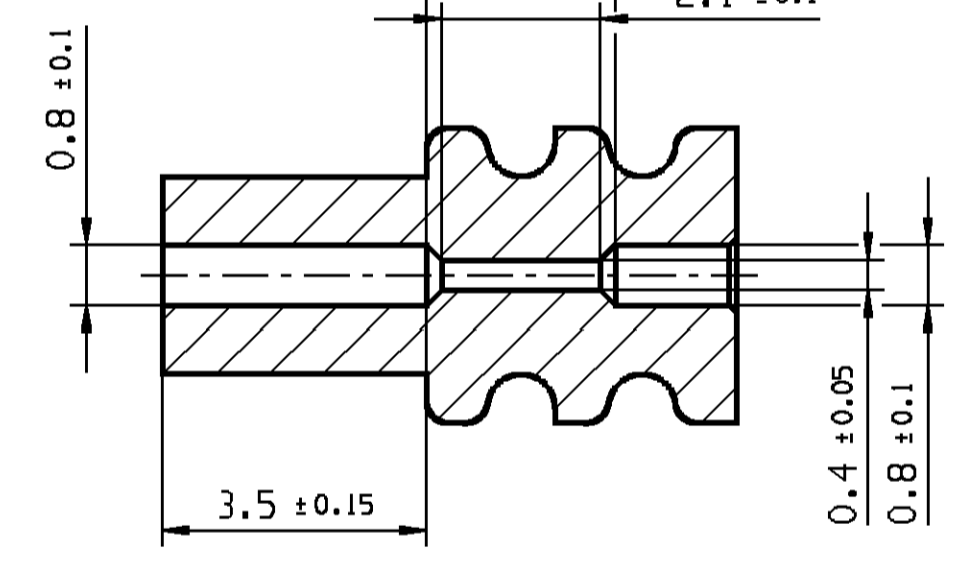


flange only for Pos.: 7-11,19,20  
 Ausfuehrung nur fuer Pos.: 7-11,19,20

| Loose / Lose   |           |          |            | Put on the belt / gegurtef |           |          |            | Pos.    | Cbl.φ<br>Ltg.φ | Cable cross-section mm² altern.<br>Leitungsquerschnitt mm² wahlw. |      | Color<br>Farbe | SIM<br>RAL | Dimension φ<br>Mass φ |       |       |       |               |       |
|--|-----------|----------|------------|----------------------------|-----------|----------|------------|---------|----------------|---|------|----------------|------------|-----------------------|-------|-------|-------|---------------|-------|
| ID-Nr.:  | Part-No.: | Part-REV | Date Datum | ID-Nr.:                    | Part-No.: | Part-REV | Date Datum |         |                | FLY   | FLRY |                |            | a±0,1                 | b±0,2 | c±0,2 | d±0,1 | e+0,1<br>-0,2 | f±0,2 |
| Seal for female-terminal 1,5 mm and tab-terminal 1,5 mm<br>Dichtung fuer Flachsteckhuelse 1,5 mm und Flachstecker 1,5 mm |           |          |            |                            |           |          |            |         |                |   |      |                |            |                       |       |       |       |               |       |
| ---  | 33120594  | 01       | 310C13     | ---                        | ---       | ---      | ---        | 0,8-1,2 | 0,08-0,13      | black<br>schwarz  | 9011 | ---            | ---        | 2,6                   | 3,9   | 2,6   | ---   |               |       |
| 406 131  | 15327913  | 42       | 13JUN00    | ---                        | ---       | ---      | ---        | 1,2-1,6 | 0,35-0,5       | wine red<br>weinrot   | 3027 | 0,8            | 1,4        | 2,6                   | 3,9   | 2,6   | ---   |               |       |
| ---  | 15344777  | 42       | 13JUN00    | ---                        | ---       | ---      | ---        | 1,2-1,6 | 0,35-0,5       | yellow<br>gelb  | 1016 | 0,8            | 1,4        | 2,6                   | 3,9   | 2,6   | ---   |               |       |
| 401 257  | 15327918  | 42       | 13JUN00    | 401 258                    | 15344666  | 42       | 13JUN00    | 1,2-2,0 | 0,5-1,0        | gray<br>grau  | 7000 | 1,0            | 1,9        | 2,6                   | 3,9   | 2,6   | ---   |               |       |
| ---  | 15344778  | 37       | 05MY99     | ---                        | ---       | ---      | ---        | 1,4-2,0 | 0,5-1,0        | green<br>gruen  | 6010 | 1,0            | 1,9        | 2,6                   | 3,9   | 2,6   | ---   |               |       |
| 406 129  | 15339412  | 42       | 13JUN00    | ---                        | ---       | ---      | ---        | 1,9-2,1 | 0,75-1,5       | maize<br>maisgelb   | 1007 | 1,5            | 1,9        | 2,6                   | 3,9   | 2,6   | ---   |               |       |
| ---  | 13735535  | 01       | 150C08     | ---                        | ---       | 01       | 150C08     | 1,2-2,0 | 0,5-1,0        | yellow<br>gelb  | 1016 | 1,0            | 1,9        | 2,6                   | 3,9   | 2,6   | ---   |               |       |
| ---  | 13735527  | 01       | 150C08     | ---                        | ---       | 01       | 150C08     | 1,2-2,0 | 0,5-1,0        | green<br>gruen  | 6010 | 1,0            | 1,9        | 2,6                   | 3,9   | 2,6   | ---   |               |       |
| Seal for female-terminal 2,8 mm and tab-terminal 2,8 mm<br>Dichtung fuer Flachsteckhuelse 2,8 mm und Flachstecker 2,8 mm |           |          |            |                            |           |          |            |         |                |   |      |                |            |                       |       |       |       |               |       |
| ---  | 33120598  | 01       | 310C13     | ---                        | ---       | ---      | ---        | 0,8-1,2 | 0,08-0,13      | wine red<br>weinrot   | 3027 | ---            | ---        | 3,4                   | 5,65  | 4,5   | ---   |               |       |
| 401 199  | 15327860  | 42       | 13JUN00    | 401 198                    | 10718144  | 42       | 13JUN00    | 1,2-2,0 | 0,35           | blue<br>blau  | 5010 | 0,8            | 1,6        | 3,4                   | 5,65  | 4,5   | ---   |               |       |
| ---  | 15498732  | 01       | 250C04     | ---                        | ---       | ---      | ---        | 1,2-2,0 | 0,35           | gray<br>grau  | 7000 | 0,8            | 1,6        | 3,4                   | 5,65  | 4,5   | ---   |               |       |
| 404 924  | 10720901  | 01       | 11MY04     | ---                        | ---       | ---      | ---        | 1,2-2,0 | 0,35           | orange<br>orange  | 2004 | 0,8            | 1,6        | 3,4                   | 5,65  | 4,5   | ---   |               |       |
| 401 187  | 15327863  | 42       | 13JUN00    | 401 188                    | 15344643  | 42       | 13JUN00    | 2,0-2,7 | 0,5-1,0        | red / brown<br>rot / braun  | 3011 | 1,6            | 2,2        | 3,4                   | 5,65  | 4,5   | ---   |               |       |
| 401 259  | 15327859  | 42       | 13JUN00    | 401 260                    | 10720641  | 42       | 13JUN00    | 2,7-3   | 1,5            | maize<br>maisgelb   | 1007 | 2,2            | 3,0        | 3,4                   | 5,65  | 4,5   | ---   |               |       |
| Seal for female-terminal 4,8 mm and tab-terminal 4,8 mm<br>Dichtung fuer Flachsteckhuelse 4,8 mm und Flachstecker 4,8 mm |           |          |            |                            |           |          |            |         |                |   |      |                |            |                       |       |       |       |               |       |
| 401 201  | 15363779  | 42       | 13JUN00    | 401 200                    | 15344644  | 42       | 13JUN00    | 1,2-2,0 | 0,35           | yellow<br>gelb  | 1016 | 0,8            | 1,6        | 6,0                   | 9,0   | 7,2   | 3,4   |               |       |
| 401 203  | 15363604  | 42       | 13JUN00    | 401 202                    | 15344645  | 42       | 13JUN00    | 2,0-2,7 | 0,5-1,0        | white<br>weiss  | 9010 | 1,6            | 2,2        | 6,0                   | 9,0   | 7,2   | 3,7   |               |       |
| 401 205  | 15327864  | 42       | 13JUN00    | 401 204                    | 15337204  | 42       | 13JUN00    | 2,7-3,8 | 1,5-2,5        | red / brown<br>rot / braun  | 3011 | 2,2            | 3,0        | 6,0                   | 9,0   | 7,2   | 4,1   |               |       |
| 401 208  | 15363605  | 42       | 13JUN00    | 401 207                    | 15344646  | 42       | 13JUN00    | 4,0-4,5 | 4,0            | green<br>gruen  | 6010 | 3,2            | 3,9        | 6,0                   | 9,0   | 7,2   | 4,6   |               |       |
| 401 210  | 15344647  | 42       | 13JUN00    | 401 209                    | 15344104  | 42       | 13JUN00    | 4,7-5,3 | 6,0            | gray<br>grau  | 7000 | 3,8            | 4,8        | 6,5                   | 9,0   | 7,2   | 5,15  |               |       |
| ---  | 13735454  | 01       | 150C08     | ---                        | ---       | 01       | 150C08     | 2,7-3,8 | 1,5-2,5        | blue<br>blau  | 5010 | 2,2            | 3,0        | 6,0                   | 9,0   | 7,2   | 4,1   |               |       |
| ---  | 13735480  | 01       | 150C08     | ---                        | ---       | 01       | 150C08     | 2,7-3,8 | 1,5-2,5        | green<br>gruen  | 6010 | 2,2            | 3,0        | 6,0                   | 9,0   | 7,2   | 4,1   |               |       |

PART-NO.  
33120594  
33120598

INNER-CONTURE  
INNERE KONTUR



Remarks :

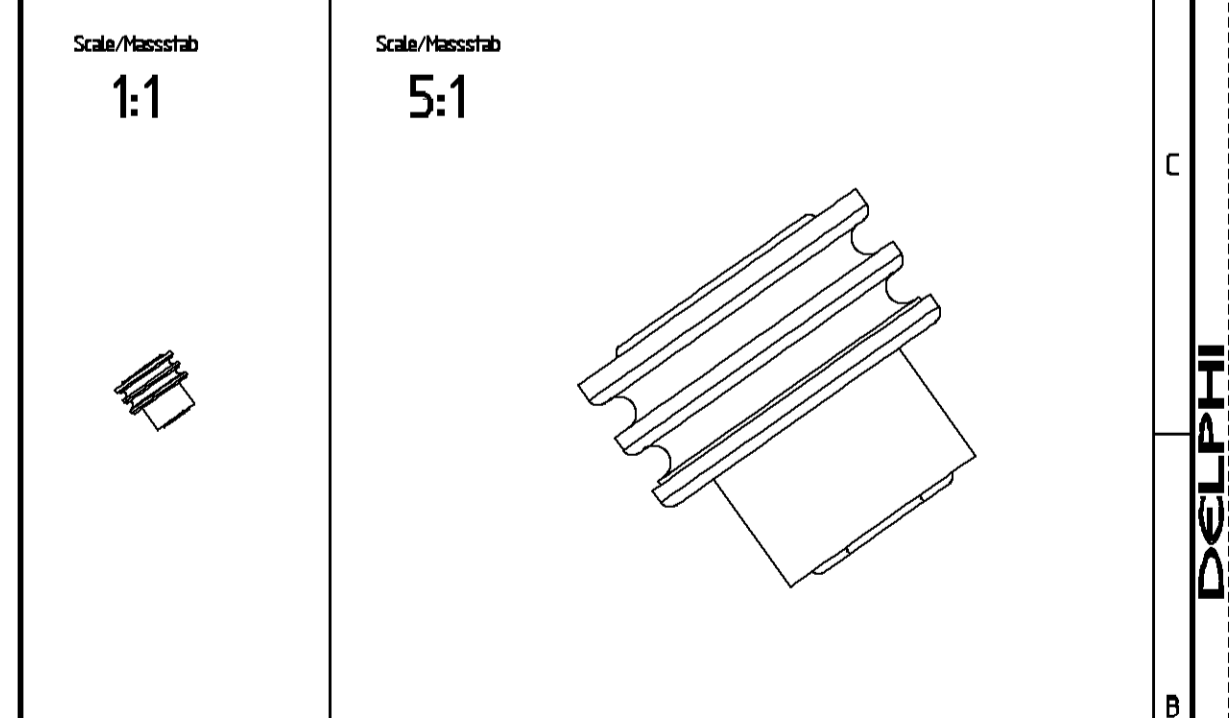
- Material: Silicone, self-lubricated,  
Zugfestigkeit: Rm min. 6,2 Nm/mm²  
Gap agumentation > 375% DIN 53 504-S2  
ozoneresistant, heatresistant -40 to +180°C  
gauged on festboard

Bemerkungen :

- Werkstoff: Silikon, selbstschmierend,  
Zugfestigkeit: Rm min. 6,2 Nm/mm²  
Reissdehnung > 375% DIN 53 504-S2  
ozonbestaendig, temperaturbestaendig -40 bis +180°C  
gemessen an Pruefplatten

| Zone  | DWG Status<br>REV | N/P/CHK | Revision history   |  | Date    | Name   | Check  | St.    | CHK |
|-------|-------------------|---------|--|--|---------|--------|--------|--------|-----|
|       | 01                |         | Initial release  |  | 16JUN00 | U.Tor. | J.Moch | R.Wis. |     |
| D12   | 01                | AA      | ID-Nr.: 607 960 and Part-No.: 0721074 deleted<br>ID-Nr.: 607 960 and Part-No.: 0721074 entfernt                                |  | 05DEC02 | Frimm  | Cvasa  | R.Wis. |     |
| C12   | 01                | AB      | ID-Nr.: 608 447 and Part-No.: 0763474 deleted<br>ID-Nr.: 608 447 and Part-No.: 0763474 entfernt                                |  | 05DEC02 | Frimm  | Cvasa  | R.Wis. |     |
| B12   | 01                | AC      | Cable φ 2,8-3,8 was 2,7-2,9<br>Leitungs φ 2,8-3,8 var 2,7-2,9<br>Cable φ 1,7-2,1 was 1,9-2,1<br>Leitungs φ 1,7-2,1 var 1,9-2,1 |  | 05DEC02 | Frimm  | Cvasa  | R.Wis. |     |
| C9    | 01                | AD      | Part-No.: 10720901 added<br>Part-No.: 10720901 hinzu   |  | 17DEC03 | Frimm  | Cvasa  | R.Wis. |     |
| C11   | 02                |         | Part-No.: 65498732 added<br>Part-No.: 65498732 hinzu   |  | 25OC04  | Frimm  | Cvasa  | R.Wis. |     |
| C9    | 03                | AA      | Cable φ 1,9-2,1 was 1,7-2,1<br>Leitungs φ 1,9-2,1 var 1,7-2,1  |  |         |        |        |        |     |
| C/D11 |                   | AB      | Part-REV / Date corrected<br>Part-REV / Datum korrigiert   |  | 24MY05  | Frimm  | Cvasa  | R.Wis. |     |
| C/D11 | 03                | AC      | Part-No. 6327863, Rev 42, BUNO was 33, 02.87<br>Part-No. 6327863, Rev 42, BUNO var 33, 02.87                                   |  | 23AU05  | Frimm  | Cvasa  | R.Wis. |     |
| D6-12 | 04                |         | Part-No. 05444651, 05444652 added<br>Part-No. 05444651, 05444652 hinzu   |  |         |        |        |        |     |
| B4    |                   | AA      | Remark No. 1 added<br>Bemerkung Nr. 1 hinzu  |  | 30SE05  | Frimm  | Cvasa  | R.Wis. |     |
| D6-12 | 05                |         | Part-No. 0536644 added<br>Part-No. 0536644 hinzu   |  | 16MY06  | Frimm  | Cvasa  | R.Wis. |     |
| C7    | 06                |         | Green was violet Part-No. 0536644<br>Gruen var violett Part-No. 0536644  |  | 27JUL06 | Frimm  | Cvasa  | R.Wis. |     |
| A9    | 06                | AA      | Cbl.φ 2,8-3,8 was 2,8-2,9 Part-No. 6327864<br>Ltg.φ 2,8-3,8 var 2,8-2,9 Part-No. 6327864                                       |  | 06OC06  | Frimm  | Cvasa  | R.Wis. |     |
| A9    | 06                | AB      | 25-4,0 was 25 Part-No. 6327864<br>25-4,0 var 25 Part-No. 6327864   |  | 08NO06  | Frimm  | Cvasa  | R.Wis. |     |
| A-D9  | 06                | AC      | Pos.-Numbering changed according to D-drawing<br>Pos.-Nummerierung an D-Zeichnung angepasst                                    |  | 26JAO7  | Frimm  | Cvasa  | P.Les. |     |
| C-A6  | 07                |         | Part 13735480, 13735480, 13735535, 13735537 Added<br>Teile 13735480, 13735480, 13735535, 13735537 hinzu                        |  | 15OC08  | W.Szo  | Frimm  | K.Pit  |     |
| D12   | 08                |         | Part-No.: 05444651, 05444652, 0536644 deleted<br>Teile-Nr.: 05444651, 05444652, 0536644 entfernt                               |  | 09DEC09 | V.Kas  | J.Sat  | SYS    |     |
| C8    | 08                | AA      | Cable cross section for Part-No.15339412 changed<br>Leitungsquerschnitt fuer Teil-Nr.15339412 geaendert                        |  | 01OCT13 | K.Wir. | T.Pin. | SYS    |     |
| E12   | 09                |         | Part 3320594 and 3320598 added<br>Teile 3320594 und 3320598 hinzu  |  | 31OCT13 | A.KHG  | A.URB  | SYS    |     |
| FB    | 09                | AA      | DIM 1,6 REMOVED<br>MASS 1,6 ENTFERNT   |  | 30JUN14 | A.KHG  | A.URB  | SYS    |     |
|       | 09                | AB      | DPN's corrected in BOM<br>DPN's korrigiert in Stueckliste  |  | 30AP15  | V.KAS  | K.STO  | SYS    |     |
|       | 09                | AC      | RAL 1007 WAS RAL 1006 (WRITING ERROR)<br>RAL 1007 WAR RAL 1006 (SCHREIBFEHLER)   |  | 28JUN16 | V.KAS  | K.STO  | SYS    |     |
| E7    | 09                | AD      | SIM RAL ADDED/HINZU  |  | 13JUL16 | R.MOL  | V.KAS  | SYS    |     |
| F11   | 09                | AE      | POSITIONS 19 AND 20 ADDED /<br>POSITIONEN 19 UND 20 HINZU  |  | 10AU16  | P.SCH  | E.OSW  | SYS    |     |
| C8    | 09                | AF      | CABLE DIAMETER CHANGED - WRITING ERROR<br>KABELDUESSCHER GEAEANDERT - SCHREIBFEHLER  |  | 09JAI17 | P.SCH  | V.KAS  | SYS    |     |
| A-B6  | 09                | AG      | CABLE DIAM. FROM MIN. 2,8 TO 2,7 CORRECTED<br>KABELDUESSCH. VON MIN. 2,8 ZU 2,7 KORRIGERT                                      |  | 20JUL17 | V.KAS  | T.BOL  | SYS    |     |
| B9    | 09                | AH      | CABLE DIAM. FROM MAX. 2,9 TO 3 CORRECTED<br>KABELDUESSCH. VON MAX. 2,9 ZU 3 KORRIGERT  |  | 05OCT18 | T.MAZ  | V.KAS  | SYS    |     |

Bemerkung



Scale/Massstab 1:1  
 Scale/Massstab 5:1

Remarks:

Bemerkungen:

Copying of this document, and giving it to others and the use or consultation of the contents thereof, are forbidden without express authority. Offenders are liable to the payment of damages. All rights are reserved in the event of the grant of a patent or the registration of a utility model or design. Weitergabe sowie Verfertigung dieser Lithografie, Verwertung und Mitteilung ihres Inhalts ist nicht gestattet, soweit nicht ausdrücklich zugestanden. Zuwiderhandlungen verpflichten zu Schadenersatz. Alle Rechte für den Fall der Patentierung oder Gebrauchsmuster-Ertragung vorbehalten.

DELPHI UNIGRAPHICS

Part No.: see chart / siehe Tabelle  
 Material: see drawing/siehe Zeichnung

Dimensions without tolerance ± 0,2  
 → ± 2°  
 Masse ohne Toleranzangabe ± 0,2  
 → ± 2°

Projection/Projektion

6501.7113/003

Erstellung der Originalzeichnung / Original design:   
 Drawing-No. 15446589  
 Form: A1

DELPHI  
D - 42119 WUPPERTAL

DELPHI  
CONTROLLED DOCUMENTS ARE ONLY AVAILABLE ON THE SERVER  
Date: 10-Oct-18 Time: 08:49  
Part: 15446589 - 0053-501